

Nusantara

# Jalu

Perkasa



## Merekam Perjalanan Lewat Lawasan

**SEBAGAI** perantau, Agus Imron menempuh sejumlah perjalanan transformatif sebelum mendirikan Nusantara Jalu Perkasa (NJP). Perkenalannya dengan kriya bahkan terjadi lantaran kebutuhan paling mendasar: untuk bertahan hidup.

Latar belakang pendidikan teater dan pergaulannya dengan seniman serta perupa membentuk cara pandang Agus Imron terhadap proses dan benda-benda. "Kalau saya ke Lasem, Jawa Tengah, melihat bangunan tua yang temboknya sudah usang, saya lihat orang-orang selalu menyingkir. Tapi buat saya, tembok itu keindahan. Dia merekam dan menyaksikan banyak peristiwa," tuturnya.

---

**LEAVING** his hometown, Agus Imron had to go through some transformative journeys before establishing Nusantara Jalu Perkasa (NJP). His first encounter with craft was even triggered by the most basic need: to survive.

*His theater education background and his closeness with many artists have shaped his views towards things and processes. "If I go to Lasem (an old city in Central Java) and see old buildings with damaged walls, I'll find beauty that other people might be oblivious about. Those buildings have a long history."*



Kegelisahan terhadap barang antik membuat Agus Imron terinspirasi menciptakan citra kawakan pada benda-benda kriya. Baginya, yang “usang” justru bernilai karena menyiratkan panjangnya proses yang telah dilalui. Prinsip ini diterapkannya ketika membesut produk. Tahapan panjang pemrosesan yang ramah lingkungan harus dilakukan sebelum hasilnya siap dilempar ke pasar.

Bersama benda-benda dekoratif bernuansa lawasan, Nusantara Jalu Perkasa pun berkibar di negara-negara luar. Tak ada benua yang belum dirambah. Perajin gerabah dan pegiat kerajinan kaca dari Yogyakarta dan Jawa Tengah, pengkriya kayu Jawa Timur, dan artisan seni rupa setempat turut berdaya seiring perputaran usahanya. Kini, produk besutan Agus Imron mulai merambah pasar lokal. Baginya, tak ada yang lebih membanggakan ketimbang menjadi tuan rumah di negeri sendiri.

---

*Concern about antique objects has inspired Agus Imron to create vintage image on crafts. For him, the “old” ones hold higher values because of the long process they have been through. This principle is applied when making a product. A long eco-friendly process is performed behind every article before it is sold to the market.*

*With their vintage decorative items, Nusantara Jalu Perkasa are gaining their popularity in many countries. Their products have been shipped to all continents. Potters, glass artisans, wooden crafters, and painters from Yogyakarta, East Java, and Central Java are empowered along. Now, Agus Imron’s work starts to enrich local markets. For him, there is no bigger pride than being an actor in the local stages.*





# Melankolia

## Table Lamp

**SERI MELANKOLIA** menjadi wujud apresiasi terhadap objek bersejarah yang hidup melampaui waktu. Dari kekaguman yang timbul ketika memandang artefak tinggalan zaman, muncul permainan warna dan tekstur yang menonjolkan kesan berumur. Dipadukan dengan kain halus tak bercela, produk ini melebur makna “baru” dan “lama”. Pajang di ruangan bersih, lampu Melankolia akan menguatkan nuansa *rustic* di dalam rumah.

**MELANKOLIA SERIES** is an appreciation for historical artifacts that survive the test of time. From the admiration to ancient objects, a texture and color configuration emerges; giving out ‘aged’ impression. Combined with a soft cloth, this art has blended the meaning of ‘new’ and ‘old’. Put this Melankolia lamp in a clean room and let it accentuate rustic atmosphere in your home.

#### Material / Materials

Mixture of cement, fiber, and sand (GRC),  
satin/linen cloth, water-based paint, clear coat

#### Ukuran / Dimension

Ø 60 cm x height 50 cm, Ø kap 70 cm

#### Berat / Weight

15 kg

#### Perawatan / Care Instructions

Clean with cloth or vacuum cleaner.  
Use brush to clean the crevices.  
Place indoor.

#### Harga / Price

**Rp850.000**



## Netrol Bottle Vase

**BOTOL** bensin adalah pemandangan khas yang jamak ditemui di pelosok Indonesia. Vas ini tercipta dari ingatan yang menyertai perjalanan ke sudut-sudut nusantara. Letakkan di atas meja atau di sudut rumah. Bersama sebatang mawar merah, kehadirannya niscaya mengingatkan pada hangat dan romantisnya masa muda.

***IF TIMELESS** beauty is what you are looking for, this bottle vase might be a perfect choice. The classic shape with natural color would go with any style of furniture. You can put some flowers in it or simply place it on a shelf to adorn your room. Let its warmth and elegance fill the air.*

### Material / Materials

Pottery, water-based paint, clear coat

### Ukuran / Dimension

**S:** Ø 20 cm x height 27 cm

**M:** Ø 24 cm x height 33 cm

### Berat / Weight

**S:** 2 kg

**M:** 2,5 kg

### Perawatan / Care Instructions

Clean with cloth or vacuum cleaner.

Use brush to clean the crevices.

Place indoor.

### Harga / Price

Set of 2 sizes S & M - Rp185.000

## Boho Classic Vase



**DIPENDEKKAN** dari istilah bohemian, gaya dekorasi boho di Eropa sudah berkembang sejak abad ke-19. Seperti tampil pada vas klasik ini, kreativitas dan pendobrakan atas tatanan tradisional menjadi spirit yang melandasi konsepnya. Bagi Agus Imron, setiap permukaan berumur mengandung spektrum warna yang kaya. Eksplorasi kelir putih lawasan pun melahirkan karya ini. Sesuai diletakkan di atas meja bersama buket bunga kesayangan, vas klasik boho akan tampil unik menonjol.

***BOHO** -shortened from bohemian- lifestyle started to bloom in Europe during the 19th century. This classic vase is a reflection of free spirit which encourages creativity and rebellion against conventional system. For Agus Imron, every aged surface has rich color spectrum. The exploration of shade of 'old' white has delivered this piece of art. Put it on your table along with your favorite flowers and see how its beauty lightens up the room.*

### Material / Materials

Terracotta, water-based paint, clear coat

### Ukuran / Dimension

**S:** Ø 25 cm x height 28 cm  
**M:** Ø 28 cm x height 31 cm

### Berat / Weight

**S:** 2 kg  
**M:** 2,5 kg

### Perawatan / Care Instructions

Clean with cloth or vacuum cleaner.  
Use brush to clean the crevices.  
Place indoor.

### Harga / Price

Set of 2 sizes S & M - **Rp275.000**



## Bowl Candles

### Material / Materials

Terracotta, paraffin, water-based paint, clear coat

### Ukuran / Dimension

**S:** Ø 12 cm x height 10 cm

**M:** Ø 13 cm x height 12 cm

**L:** Ø 15 cm x height 14 cm

### Berat / Weight

**S:** 1,8 kg

**M:** 2 kg

**L:** 2,4 kg

### Varian / Variants

#### Color Variants:

Gray spotted black, silver spotted black,  
classic black, stone black

### Perawatan / Care Instructions

Clean with cloth or vacuum cleaner.

Use brush to clean the crevices.

Place indoor/ outdoor without direct sunlight exposure.

### Harga / Price

Set of 3 sizes S, M, L - **Rp250.000**

**JAUH** sebelum lampu ditemukan, manusia menggunakan pelita sebagai sumber penerangan. Di Eropa abad ke-13, para pembuat lilin biasa berkeliling dari rumah ke rumah menjajakan jasa untuk membuat suluh dari sisa lemak di dapur ataupun menjual lilin buatannya. Kini, lilin menjadi elemen dekoratif yang menyertai momen-momen istimewa. Diwadahi mangkuk gerabah tahan-panas, set ini memuat parafin setebal 5 cm. Isi ulang dengan minyak bersumbu setelah habis untuk membuatnya tetap menyala.

**CANDLES** were one of the oldest sources of lights. In Europe around the 13th century, people used to make candles out of animal fat or bought them from candle makers. Now, candles have become decorative elements to be lit during special moments. Contained in a heat resistant bowl, this set has 5 cm thick paraffin. Refill with oil and wick after it is used up and a lovely lamp is yours.



## Turquoise Ball Vase

**DIADAPTASI** dari nuansa rona samudra, *turquoise* atau biru toska mengacu pada rekam jejak perjalanan batu pirus yang masuk ke Eropa melalui Turki. Oleh NJP, warna itu dipulaskan pada gerabah bola karya perajin Pundong, Bantul untuk merespon tren kelir toska pada tahun 2015. Melalui lima tahapan proses yang utamanya terdiri dari pewarnaan, peneksturan, dan pembakaran, vas ini pun tampak menyerupai bumi dari kejauhan. Isi dengan akar-akaran dan biarkan imajinasi berkelana menatap keindahannya.

**ADAPTED** from the colors of sea, *tosca blue* reflects the trace of turquoise stone that came to Europe via Turkey. NJP present this amazing hue upon a pottery ball created by local crafters; responding to the *tosca* trend in 2015. After undergoing five phases of processing, including coloring, texturing, and burning, this vase looks like the earth from afar. Arrange some roots and leaves in it and let your imagination wander.

### Material / Materials

Terracotta, water-based paint, clear coat

### Ukuran / Dimension

**S:** Ø 15 cm x height 13 cm

**M:** Ø 17 cm x height 16 cm

### Berat / Weight

**S:** 1 kg

**M:** 2 kg

### Perawatan / Care Instructions

Clean with cloth or vacuum cleaner.

Use brush to clean the crevices.

Place indoor.

### Harga / Price

Set of 2 sizes S & M - **Rp200.000**





## Cylindrical Candles



**SET** lilin yang menonjolkan kesan berkerak ini adalah salah satu produk di bawah tema antik yang dilansir tahun 2020. Agar kokoh diletakkan di meja, bagian bawah silinder diisi gabah kering sebagai pemberat. Setiap tabung hanya berisi parafin 5 cm agar fungsinya sebagai sumber cahaya tetap optimal. Lapisan semen pasir akan memadamkan api seketika sumbu menyentuhnya. Ketuk lapisan semen untuk memecahnya, set ini pun menjelma vas antik setelah lilin habis.

***THIS** candle holder set is one of the antique-themed collections launched in 2020. To make them stand stably, the bottom part of the cylinder is filled with dry grain as ballast. Every tube is filled with 5 cm of paraffin to make it functions optimally as a source of light. A layer of cement-sand will put out the light automatically when the fire has reached it. Knock the layer off and voila, now you have charming vases!*

### Material / Materials

Terracotta, paraffin, water-based paint, clear coat

### Ukuran / Dimension

**S:** Ø 8 cm x height 10 cm

**M:** Ø 11 cm x height 26 cm

**L:** Ø 12 cm x height 31 cm

### Berat / Weight

**S:** 1 kg - **M:** 1,5 kg - **L:** 2 kg

### Perawatan / Care Instructions

Clean with cloth or vacuum cleaner.

Use brush to clean the crevices.

Place indoor/outdoor without direct sunlight exposure.

### Harga / Price

Set of 3 sizes S, M, L - **Rp200.000**

## Wooden Candles

**SELALU** ada jalan menuju inspirasi. Perjalanan ke timur membuat Agus Imron tergelitik untuk bereksperimen. Di pelosok Ngawi, Cepu, Pati, Blora, hingga Bojonegoro, Jawa Timur, ia bertemu sisa kayu jati berkualitas. Balok-balok itu kemudian diolahnya hingga tampil bersepuh warna metal. Gurat asli kayu sengaja direspon agar tampak seperti karat dan tukak pada logam. Nuansa antik pun tercipta seketika. Hadirkan di ruang keluarga, set lilin ini akan membawa romansa era Victoria dan menghidupkan suasana.

**TRAVELING** is a vast source of inspiration. Exploring east part of Java, Agus Imron was intrigued to experiment. In the remote areas of Ngawi, Cepu, Pati, Blora, and Bojonegoro, he found high quality teak wood remains. He then cultivated the lumber and apply some metallic coat. The wood grains are polished so as to look like rust and patina. In your living room, this candle holder set will shine out Victorian romantic impression and warm up your nights.

### Material / Materials

Teak wood, paraffin, water-based UV paint, clear coat

### Ukuran / Dimension

**S:** Ø 11 cm x height 15 cm -

**M:** Ø 11 cm x height 20 cm - 2 kg

### Berat / Weight

**S:** 1,5 kg

**M:** 2 kg

### Varian / Variants

#### Color Variants:

Natural silver

Natural bronze

### Perawatan / Maintenance

Clean with cloth or vacuum cleaner.

Use brush to clean the crevices.

Place indoor/outdoor without direct sunlight exposure.

### Harga / Price

Set of the same color with two size S & L - **Rp210.000**

## Usuk Wooden Mirror

**TAK** ada batas untuk kreativitas. Balok-balok jati bongkaran rumah lawas pun bisa menjadi karya seni. Tumpukan usuk berusia puluhan tahun yang ditemukan di pelosok Jawa Timur begitu kaya akan tekstur yang tercipta alami oleh tempaan cuaca, sarang semut, hingga korosi paku. Terinspirasi, penyangga atap rumah pun menjelma sarana refleksi. Natural dan *rustic*, keberadaan cermin ini akan mengingatkan pada hangatnnya suasana perdesaan.

***CREATIVITY** knows no limit. With inventive skill teak woods from old houses can transform into a piece of art. Reclaimed lumber is usually so rich in texture, shaped by years of weather exposure. Cracks and corrosion leave behind exquisite beauty, like what is shown by this mirror frame. Natural and rustic, it will remind us the exotism of a countryside.*



### Material / Materials

Teak wood, mirror 3 mm, clear coat

### Ukuran / Dimension

**M:** 60 x 4 x 90 cm

### Berat / Weight

**M:** 7,5 kg

### Perawatan / Care Instructions

Clean with cloth or vacuum cleaner.  
Use brush to clean the crevices.  
Place indoor.

### Harga / Price

**Rp750.000**



**Material/ Materials**

Terracotta, water-based paint, clear coat

**Varian/ Variants**

**Color Variants:**

Cream

Black-spot gray

## Primeval Figures

**DI MASA** lampau, totem menjadi sarana para leluhur untuk terhubung dengan alam semesta. Ini menjadi bukti kebijaksanaan generasi terdahulu. Bagi NJP, set unik ini melambangkan penghormatan terhadap mereka yang telah mewariskan kebudayaan. Sangat digemari di Amerika dan Eropa, tiga patung yang sarat simbol ini akan membubuhkan nuansa etnik ke rumah Anda.

***IN THE** old time, totem was the media for our ancestors to connect with nature. It is part of their indigenous wisdom. For NJP, this unique set symbolizes respect to those who have bequeathed us valuable culture. Highly appreciated in the US and Europe, these three figures will exude ethnical atmosphere in your favorite room.*

**Ukuran / Dimension**

**S:** Ø 6 cm x height 13 cm

**M:** Ø 8 cm x height 18 cm

**L:** Ø 10 cm x height 23 cm

**Berat / Weight**

**S:** 0,4 kg

**M:** 0,8 kg

**L:** 1,5 kg

**Perawatan / Care Instructions**

Clean with cloth or vacuum cleaner.

Use brush to clean the crevices.

Place indoor.

**Harga / Price**

Set of 3 sizes S, M, L - **Rp180.000**



## *Lin Vase with Stainless Chrome*

**DI EROPA** abad ke-18 hingga ke-19, jambangan dianggap berharga karena menjadi hadiah diplomatik kerajaan. Para pembuatnya bahkan dihormati layaknya orang terpandang. Vas pun menjadi alat komunikasi yang merefleksikan kekuasaan, kekayaan, dan status pemberinya. Dengan teknik pelapisan logam, vas ini mengingatkan kembali pada kemasyhuran zaman itu. Lapisan logam antikorosi di mulut vas akan meminimalisir kerusakan akibat jamur, korosi, dan oksidasi.

*IN EUROPE* around the 18th and 19th centuries, vases were considered valuable because they were often presented as diplomatic gifts between kingdoms. They were a communication symbol signifying the wealth and the status of the giver. With metal coating technique, this vase might remind us the glory of the era. The stainless metal coating would also repel mold, corrosion, and oxidation.

### Material / Materials

Terracotta with stainless chrome

### Ukuran / Dimension

**S:** Ø 30 cm x height 35 cm

### Berat / Weight

**S:** 5 kg

### Varian / Variants

#### Color Variants:

Melancholic gray  
Cream

### Perawatan / Maintenance

Clean with cloth or vacuum cleaner.  
Use brush to clean the crevices.  
Place indoor.

### Harga / Price

**Rp650.000**

## Thin Vase with Copper Chrome

**KONON**, penggunaan vas sebagai persembahan sudah terjadi sejak lima ribu tahun silam. Kini, desain dan fungsi bejana telah banyak berkembang, sebagaimana vas pipih kreasi NJP. Melalui proses pembakaran yang rumit untuk memunculkan tekstur dan menempelkan lapisan tembaga, elemen dekoratif yang sangat digemari di Belarusia ini akan menjadi aksent art deco yang cantik sekaligus elegan.

**IN THE PAST**, vases were part of offerings. Now their designs and functions have rapidly improved, such as this thin vase created by NJP. The production involves a complicated burning process to generate special texture and to paste the copper coating. This decorative element is a favorite in Belarus. In your house, it would give a beautiful and classy art deco accent.

### Material / Materials

Terracotta with copper chrome

### Ukuran / Dimension

35 x 17 x 30 cm

### Berat / Weight

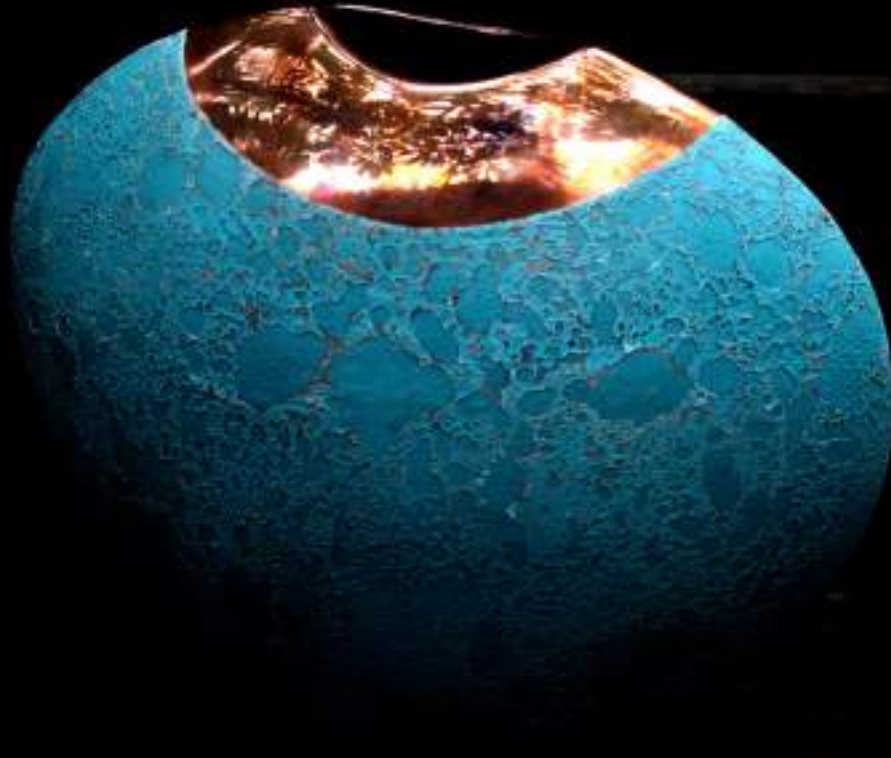
5 kg

### Perawatan / Maintenance

Clean with cloth or vacuum cleaner.  
Use brush to clean the crevices.  
Place indoor.

### Harga / Price

**Rp450.000**







## Nusantara Jalu Perkasa

### Address

Jalan Imogiri Barat KM 6 RT 06 Dusun Semail,  
Bangunharjo, Sewon Bantul  
D.I. Yogyakarta - Indonesia

### Telephone

+62 274 439 6027 / +62 813 2807 4042

### E-mail

[nusantarajalu.office@gmail.com](mailto:nusantarajalu.office@gmail.com)

### Online

[nusantarajalu](https://www.nusantarajalu.com)